

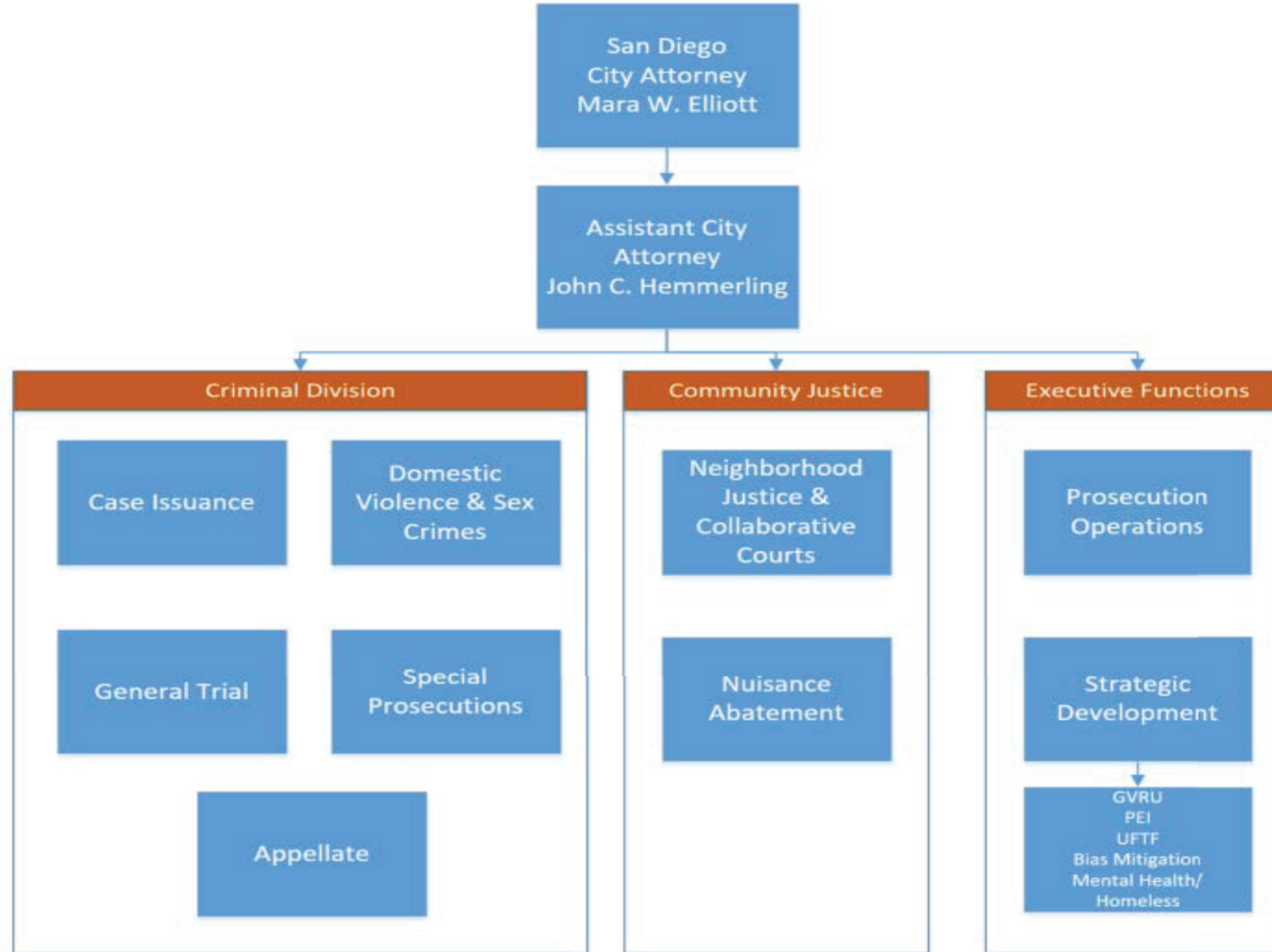
Office of City Attorney Mara W. Elliott

Criminal & Community Justice Divisions

Public Safety and Livable Neighborhoods Committee

May 2021

The Structure



Strategic Priorities

Criminal & Community Justice Division

- Prosecution priorities: **Victims, Guns and DUI.**
- Aggressively investigating and prosecuting cases that have victims, result from impaired driving, or involve firearms.
- Treating drug abuse as a public health crisis.
- Reviewing cases through a racial equity lens.
- Protecting our neighborhoods by cracking down on nuisance properties.

Criminal Justice Actions and Reforms

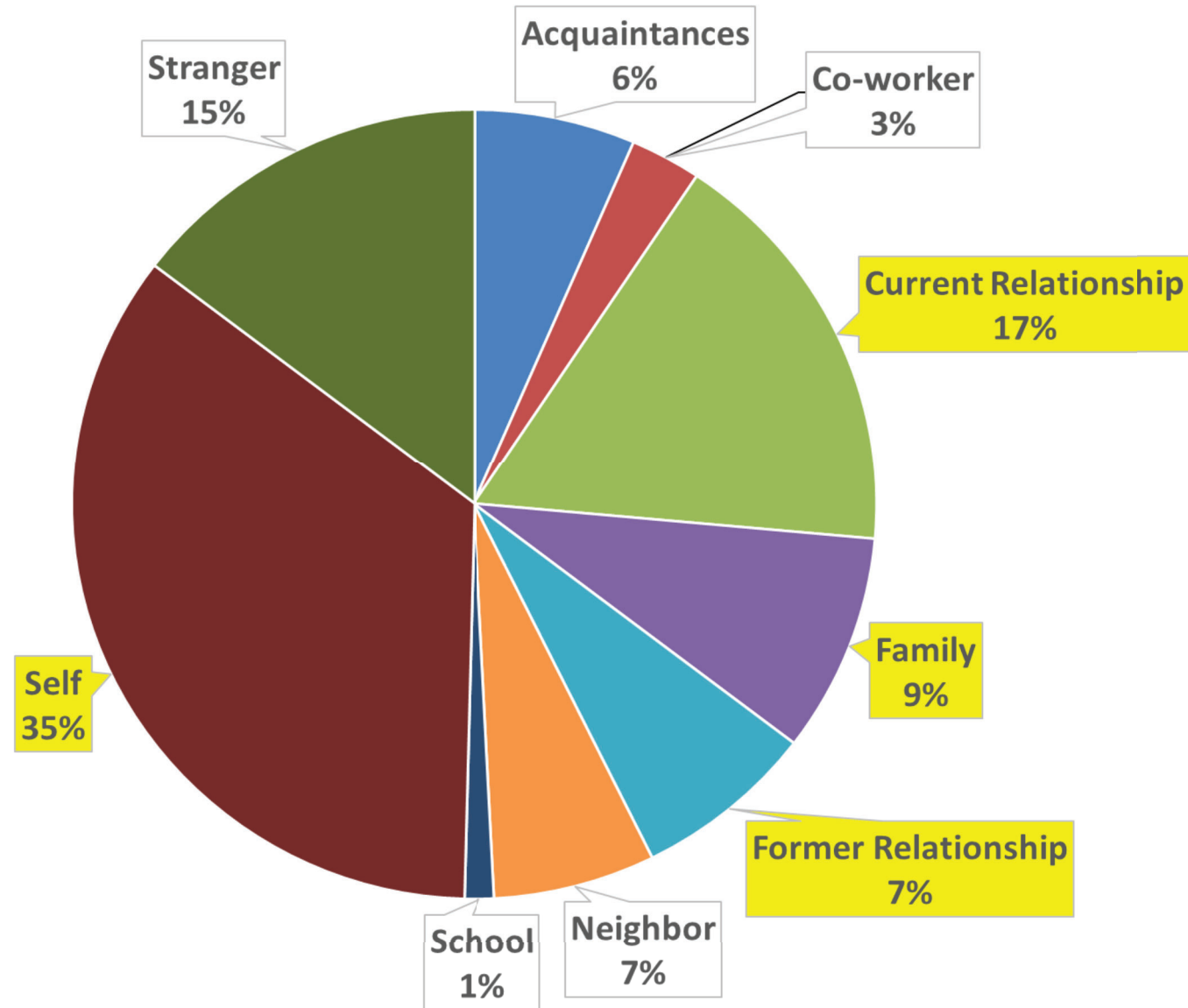
Our Framework and Action Plan outline key strategies for 2021 and beyond.

We focus on the evolving landscape of criminal justice by instituting reforms, anticipating legislation and initiatives with specific attention to our priority cases involving **Victims, Guns, and DUI**.

Gun Violence Interventions

- **35%** FAMILY VIOLENCE or STALKING
- **23%** extreme SUBSTANCE ABUSE
- **31%** threats of SUICIDE
- **18 GVROs:** UNSAFE FIREARM STORAGE
- **19 GVROs:** THREATS OF VIOLENCE BY MINORS
- **43 GVROs:** threats against a WORKPLACE or SCHOOL

**Gun Violence Interventions:
Relationship of Respondent to Threatened Party**





Firearms Seized 2018 – 2021 | **1,011**

Handguns:	549
Shotguns:	134
Long Rifles:	265
Assault Rifles:	48
Unknown Type:	2
Antique/Collectible:	13

Domestic Violence Victims

Victim Service Coordinators – Support victims of abuse with proactive service and referral outreach.

Vertical Prosecution – Dedicated point of contact for victim communication and in-depth knowledge of the case.

High Risk Team – Crisis support in particularly dangerous situations in partnership with local non-profits and the District Attorney's Office.

City Attorney Investigators – Dedicated team of investigators to provide consistent and broader investigation services for cases referred to our office for prosecution.

Nuisance Abatement Unit

NAU collaborates with City, County, and State agencies on cases that often originate with constituents who contact SDPD or their Councilmember.

- Substandard housing
- Independent Living Facility violations
- Patient dumping
- Run-down and neglected properties
- Red-light activities
- Environmental crimes

Special Prosecutions Unit

- All firearms-related cases
- Vehicular manslaughter
- Hate crimes
- Unlawful marijuana dispensaries
- Crimes by public official/officer
- High-profile prosecutions

Unsafe Facilities Task Force

Pilot program with SDPD to protect elder and dependent adults in substandard living conditions through focused attention and review by DCAs in the Nuisance Abatement and Vulnerable Victims units.

Partners include:

- Code Enforcement Division of DSD
- San Diego Fire and Rescue Department
- PERT
- Adult Protective Services
- Community Care Licensing

Prosecution and Law Enforcement Assisted Diversion Services (PLEADS)

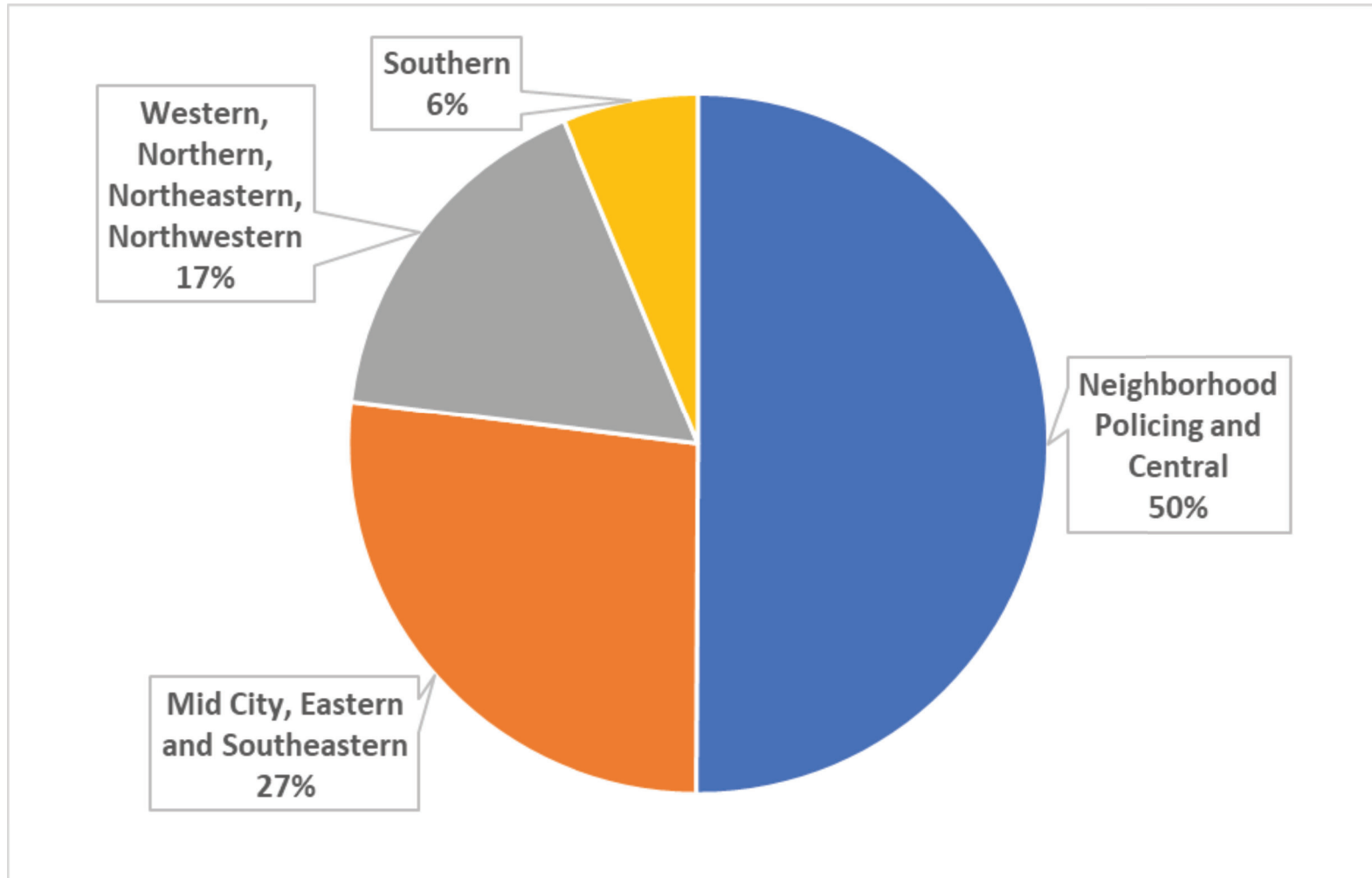
*Immediately assess individual needs
to provide specifically tailored
behavioral health service referrals
in lieu of criminal prosecution.*

Prosecution and Law Enforcement Assisted Diversion Services (PLEADS)

GOAL: Reduce drug dependence and harm to self or others by redirecting low-level chronic drug users to community-based services before cases are presented to or filed by the City Attorney.

2020 PLEADS REFERRALS

1,244 unique individuals – 87% Homeless





Questions?

Office of the City Attorney

Office of the City Attorney

Criminal and Community Justice Division

Nicole R. Crosby
Chief Deputy City Attorney of Strategic
Development
Criminal and Community Justice Division
1200 Third Avenue, Suite 700
San Diego, CA 92101
(619)-533-5544

John C. Hemmerling
Assistant City Attorney
Criminal and Community Justice Division
1200 Third Avenue, Suite 700
San Diego, CA 92101
(619)-533-5500